

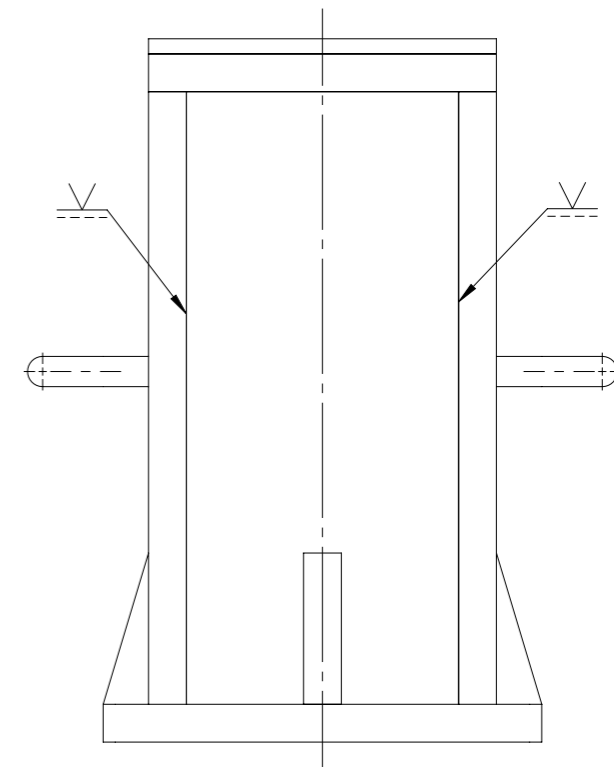
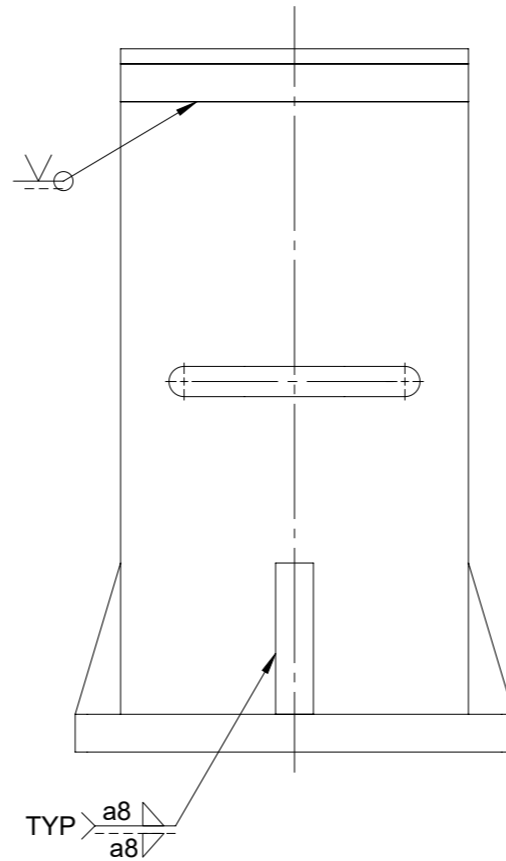
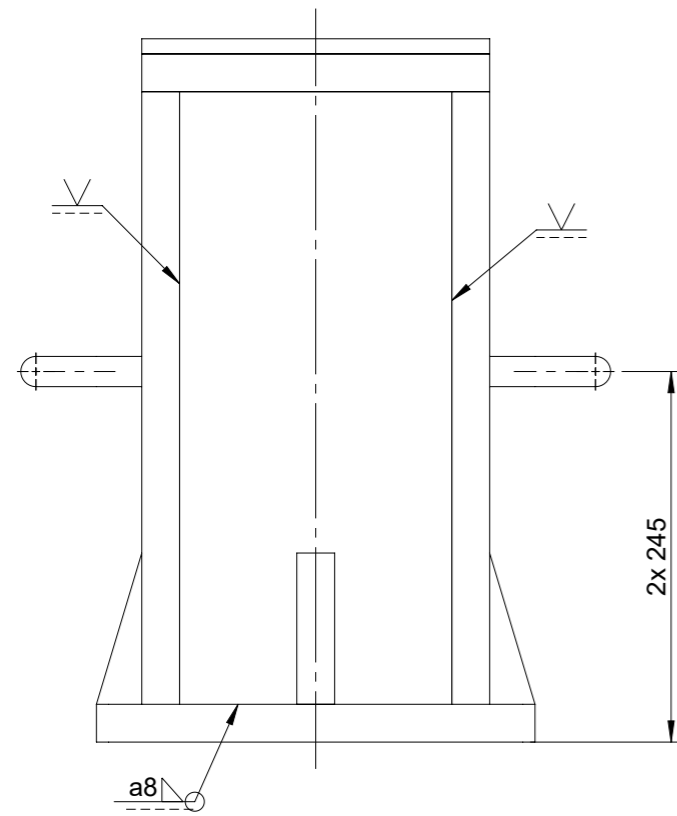
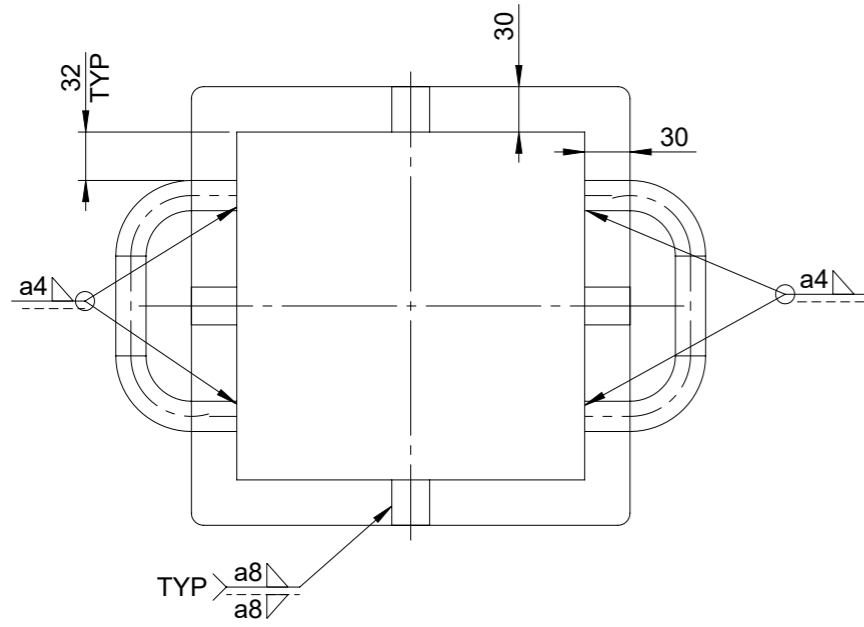
ITEM NO.	QTY.	DESCRIPTION	MATERIAL	WEIGHT (KG)
1	1	PLATE, 25 x 290 x 290	Al 6082-T6	5.87
2	2	PLATE, 25 x 230 x 405	Al 6082-T6	6.52
3	1	PLATE, 25 x 230 x 230	Al 6082-T6	3.70
4	2	PLATE, 25 x 180 x 405	Al 6082-T6	5.10
5	4	PLATE, 25 x 30 x 100	Al 6082-T6	0.10
6	1	PLATE, 10 x 230 x 230	PTFE	1.16
7	2	ROD ϕ 20	Al 6082-T6	0.22

NOTES:

1. UNLESS OTHERWISE SPECIFIED DIMENSIONS ARE IN MILLIMETRES
ALL STANDARDS REFERRED TO SHALL BE THE CURRENT ISSUE.
2. TOLERANCING ISO 8015.
GENERAL WELDING TOLERANCES ISO 13920-BF
3. UNLESS OTHERWISE SPECIFIED:
DEBURR EXTERNAL EDGES AND CORNERS.
4. ALL WELDING ACCORDING TO NORSOK M-102
STRUCTURE ALUMINIUM FABRICATION, INSPECTION CLASS D.
5. PROCESS SPECIFICATION AS PER MDP REPORT FOR REFERRED MATERIAL NUMBER
6. TRACEABILITY MARKING
USE LOW STRESS PERMANENT MARKING
7. ITEM 6 SHALL BE ATTACHED TO ITEM 3 WITH STRONG ADHESIVE.
8. USE THE HANDLE ONLY FOR LIFTING OF THE TEST STAND

<p>Proprietary information</p> <p>This document contains confidential information that is the property of OneSubsea. Receipt or possession does not convey any rights to disclose, reproduce or use same for any purpose other than that granted by prior agreement or express written permission of OneSubsea</p>	<p>Title</p> <p>TIE-IN STAND 465 MM HEIGHT, WORKSHOP USE</p> <p>WELDING / MACHINING</p>				
	<p>Modified by</p> <p>SUSHMA, SIRIKONDA</p>	<p>Originator</p> <p>SUSHMA, SIRIKONDA</p>	<p>Document no.</p> <p>10009026083</p>	<p>Doc. ver.</p> <p>00</p>	<p>ECO no.</p>
	<p>Checked by</p> <p>CHAUDHARI, MUKESH</p>	<p>Material no. (part)</p> <p>10389073</p>	<p>Plant</p> <p>160</p>	<p>Release date</p> <p>28.10.2024</p>	<p>Reason for issue</p> <p>IFC</p>
	<p>Approved by</p> <p>AGNIHOTRI, NIKHIL</p>	<p>Material spec.</p> <p>SEE CUTLIST</p>		<p>Estimated Weight</p> <p>35 kg</p>	<p>Size</p> <p>A3</p>
				<p>Sheet no.</p> <p>1 of 3</p>	

WELDING



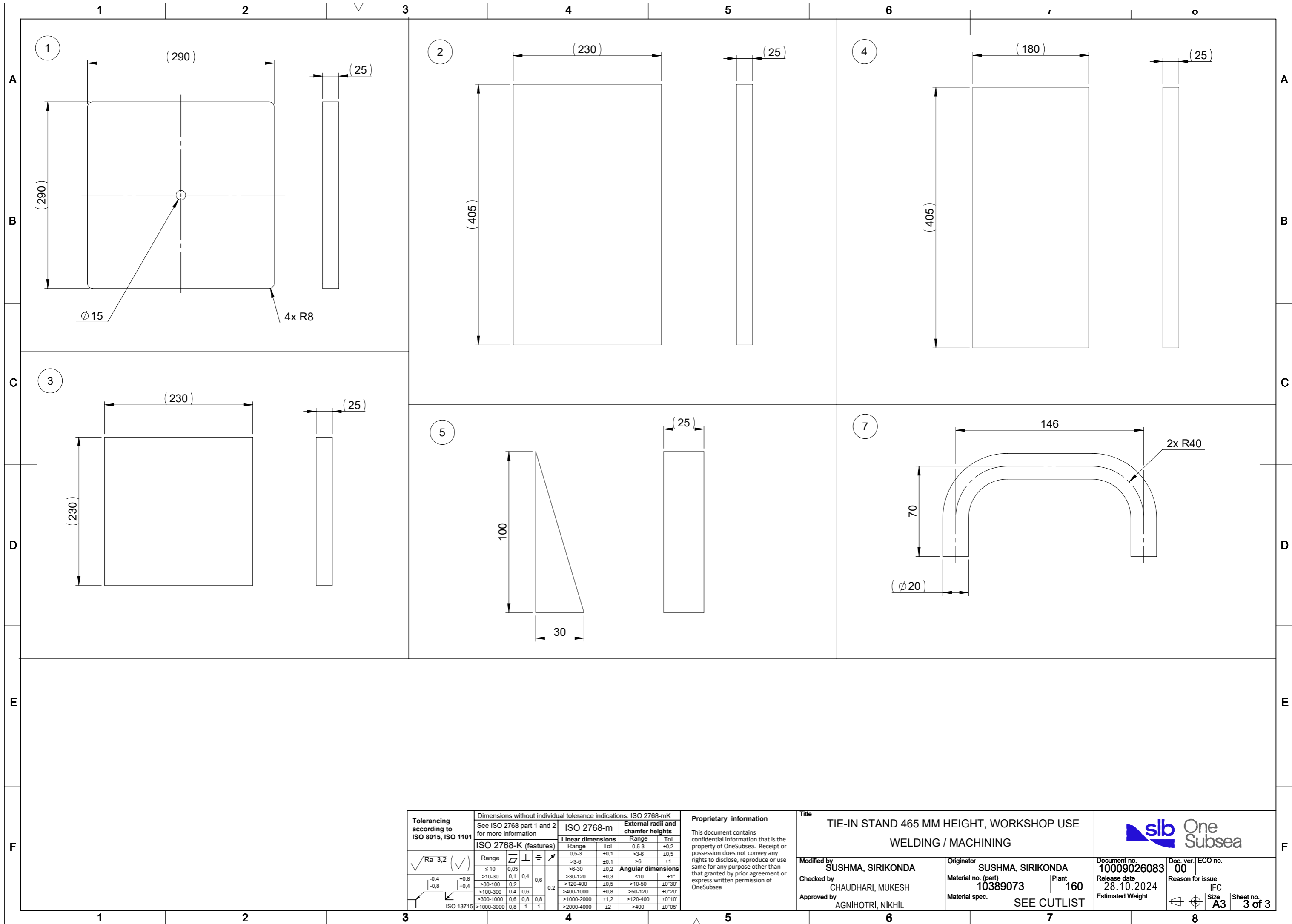
Welding dimensional tolerances ISO 13920-BF (millimetres)	Linear dimensions	
	Range	Tol
	2-30	±1
	>30-400	±2
	>400-1000	±3
	>1000-2000	±4
	>2000-4000	±6
	>4000-8000	±8
	>8000-12000	±10
	>12000-16000	±12
	>16000-20000	±14
	>20000	±16

Proprietary information
This document contains confidential information that is the property of OneSubsea. Receipt or possession does not convey any rights to disclose, reproduce or use same for any purpose other than that granted by prior agreement or express written permission of OneSubsea

Title		
TIE-IN STAND 465 MM HEIGHT, WORKSHOP USE WELDING / MACHINING		
Modified by SUSHMA, SIRIKONDA	Originator SUSHMA, SIRIKONDA	Document no. 10009026083
Checked by CHAUDHARI, MUKESH	Material no. (part) 10389073	Plant 160
Approved by AGNIHOTRI, NIKHIL	Material spec. SEE CUTLIST	Release date 28.10.2024
		Reason for issue IFC
		Estimated Weight



Doc. ver. 00	ECO no.
Reason for issue IFC	Size A3
Sheet no. 2 of 3	



Tolerancing according to ISO 8015, ISO 1101 $\sqrt{Ra\ 3,2}$ (✓) ISO 13715	Dimensions without individual tolerance indications: ISO 2768-mK See ISO 2768 part 1 and 2 for more information				Proprietary information This document contains confidential information that is the property of OneSubsea. Receipt or possession does not convey any rights to disclose, reproduce or use same for any purpose other than that granted by prior agreement or express written permission of OneSubsea				Title TIE-IN STAND 465 MM HEIGHT, WORKSHOP USE WELDING / MACHINING								
	ISO 2768-K (features) Range \square \perp \equiv \nearrow ≤ 10 0,05 0,4 0,6 0,2 >10-30 0,1 0,4 0,6 0,2 >30-100 0,2 0,6 0,8 0,2 >100-300 0,4 0,6 0,8 0,2 >300-1000 0,6 0,8 0,8 0,2 >1000-3000 0,8 1 1 0,2		ISO 2768-m Linear dimensions External radii and chamfer heights Range Tol Range Tol 0,5-3 ±0,1 0,5-3 ±0,2 >3-6 ±0,1 >3-6 ±0,5 >6-30 ±0,2 >6 ±1 >30-120 ±0,3 ≤10 ±1° >120-400 ±0,5 >10-50 ±0°30' >400-1000 ±0,8 >50-120 ±0°20' >1000-2000 ±1,2 >120-400 ±0°10' >2000-4000 ±2 >400 ±0°05'		Modified by SUSHMA, SIRIKONDA				Originator SUSHMA, SIRIKONDA				Document no. 10009026083		Doc. ver. 00		ECO no. 00
Checked by CHAUDHARI, MUKESH				Material no. (part) 10389073				Plant 160				Release date 28.10.2024		Reason for issue IFC			
Approved by AGNIHOTRI, NIKHIL				Material spec. SEE CUTLIST				Estimated Weight SEE CUTLIST				Size A3		Sheet no. 3 of 3			